

# PERMIAN

## RESOURCES

Corporate Headquarters  
300 N. Marienfeld St., Ste. 1000  
Midland, TX 79701  
Office: (432) 695-4222  
Website: [www.permianres.com](http://www.permianres.com)

### ABOUT PERMIAN RESOURCES

Permian Resources (NYSE: PR) is an independent oil and natural gas company focused on driving sustainable returns through the responsible acquisition, optimization and development of high-return oil and natural gas properties. The Company's operations are focused in the Permian Basin, with assets concentrated in the core of the Delaware Basin. Permian Resources is headquartered in Midland, Texas. Permian Resources operates gathering lines for the purpose of transporting produced product to third party purchasers, a portion of which are DOT PHMSA regulated lines.

### WHAT DOES PERMIAN RESOURCES DO IF A LEAK OCCURS?

To prepare for the event of a leak, pipeline companies regularly communicate, plan and train with local emergency responders. Upon the notification of an incident or leak the pipeline company will immediately dispatch trained personnel to assist emergency responders.

Pipeline operators and emergency responders are trained to protect life, property and facilities in the case of an emergency.

Pipeline operators will also take steps to minimize the amount of product that leaks out and to isolate the pipeline emergency.

### MAINTAINING SAFETY AND INTEGRITY OF PIPELINES

Permian Resources invests significant time and capital maintaining the quality and integrity of their pipeline systems. Its active pipelines are consistently monitored by field personnel. Permian

Resources also utilizes aerial surveillance and/or on-ground observers to identify potential dangers. Field personnel monitor the pipeline system and assess changes in pressure and flow and identify and address any possibility of a leak. Automatic shut-off valves are sometimes utilized to isolate a leak.

Gas gathering pipeline operators have developed supplemental hazard and assessment programs known as Safety Management Programs. Specific information about Permian Resources program may be found by contacting us directly.

### WHAT ARE THE SIGNS OF A NATURAL GAS PIPELINE LEAK?

- Blowing or hissing sound
- Dust blowing from a hole in the ground
- Continuous bubbling in wet or flooded areas
- Gaseous or hydrocarbon odor
- Dead or discolored vegetation in a green area
- Flames, if a leak has ignited

### WHAT SHOULD I DO IF I SUSPECT A PIPELINE LEAK?

Your personal safety should be your first concern:

- Evacuate the area and prevent anyone from entering
- Abandon any equipment being used near the area
- Avoid any open flames
- Avoid introducing any sources of ignition to the area (such as cell phones, pagers, 2-way radios)
- Do not start/turn off motor vehicles/ electrical equipment

### EMERGENCY CONTACT:

1-432-699-9345

### PRODUCTS/DOT GUIDEBOOK ID#/GUIDE#:

Natural Gas	1971	115
-------------	------	-----

### NEW MEXICO COUNTIES OF OPERATION:

Eddy	Lea
------	-----

*Changes may occur. Contact the operator to discuss their pipeline systems and areas of operation.*

- Call 911 or contact local fire or law enforcement
- Notify the pipeline company
- Do not attempt to extinguish a natural gas fire
- Do not attempt to operate any pipeline valves

### PRODUCTS TRANSPORTED

**Product:** Natural Gas

**Leak Type:** Gas

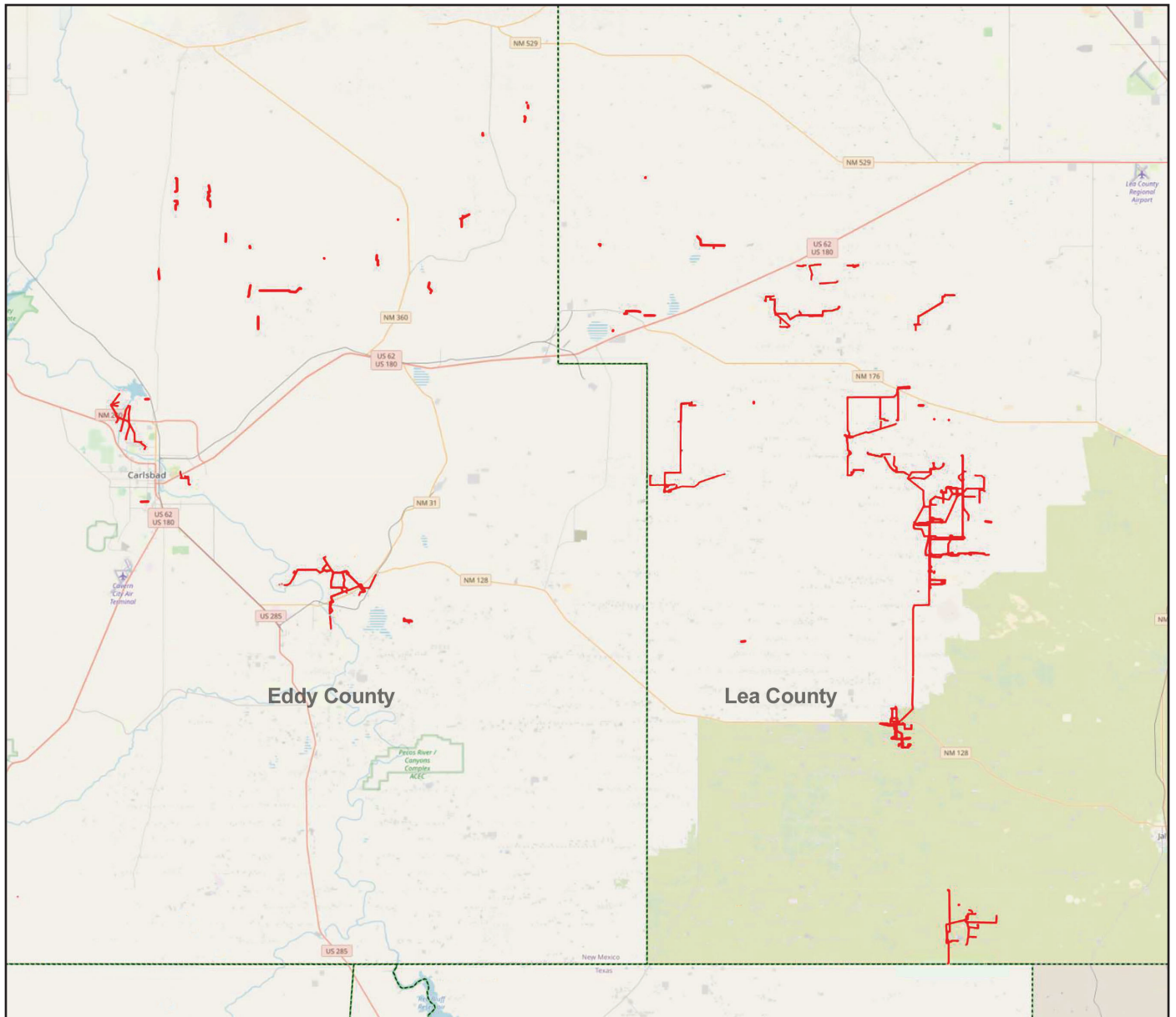
**Vapors:** Lighter than air and will generally rise and dissipate. May gather in a confined space and travel to a source of ignition.

**Health Hazards:** Will be easily ignited by heat, sparks or flames and will form explosive mixtures with air. Vapors may cause dizziness or asphyxiation without warning and may be toxic if inhaled at high concentrations. Contact with gas or liquefied gas may cause burns, severe injury and/or frostbite.

### HOW TO GET ADDITIONAL INFORMATION

For additional information, contact us at [info@permianres.com](mailto:info@permianres.com) or (432) 695-4222.





Base map courtesy of openstreetmap.org

**PERMIAN**  
RESOURCES